

### QUICK DUMP VALVE FAIL-SAFE OR DOUBLE-ACTING DESIGN



#### FEATURES:

- Choice of double-acting air x air or normally-closed operation
- Bubble-tight seal with up to 25" of water
- Minimum 40 PSI opens full stroke
- Large full stroke flow area for ultra-fast drain
- Accessible maintenance, even when welded into sink
- Normally-closed design uses non-wetted, stainless steel spring

#### DESIGN:

The Plast-O-Matic Quick Dump Valve is designed for use in wet benches, where the liquid in the sink has to be drained as quickly as possible. The valve is cemented or fused directly into the drain, depending upon the material. A spring or air-loaded piston keeps the valve closed bubble-tight with up to 25" of water. The outflow area is designed to provide superior drainage performance.

Standard operation is normally-closed (air x spring) and opened with air pressure controlled by a remote 3-way solenoid valve. When air pressure is relieved, a non-wetted internal spring automatically closes the valve.

The valve can be ordered, or easily converted to, a double-acting (air x air) design. In the double-acting design, a

remote 4-way solenoid valve is used to control air pressure to open, and air pressure to close.

Series IDA provides up to 50% greater flow capacity and requires less air pressure to operate. Higher flows translate into less particle adhesion to tank sidewalls and higher purity; lower air pressure permits installation flexibility.

#### MATERIALS:

Valve body, housing, piston and cylinder are choice of natural polypro, Kynar PVDF, or Geon PVC. Elastomers are choice of EPDM or FKM (Viton). In the normally-closed version, the spring (non-wetted) is stainless steel.

#### FLOW RATES

SIZE	GPM*
4".....	83.1
5".....	133.0
6".....	176.0

\* Based on 25" of water head in laboratory conditions.

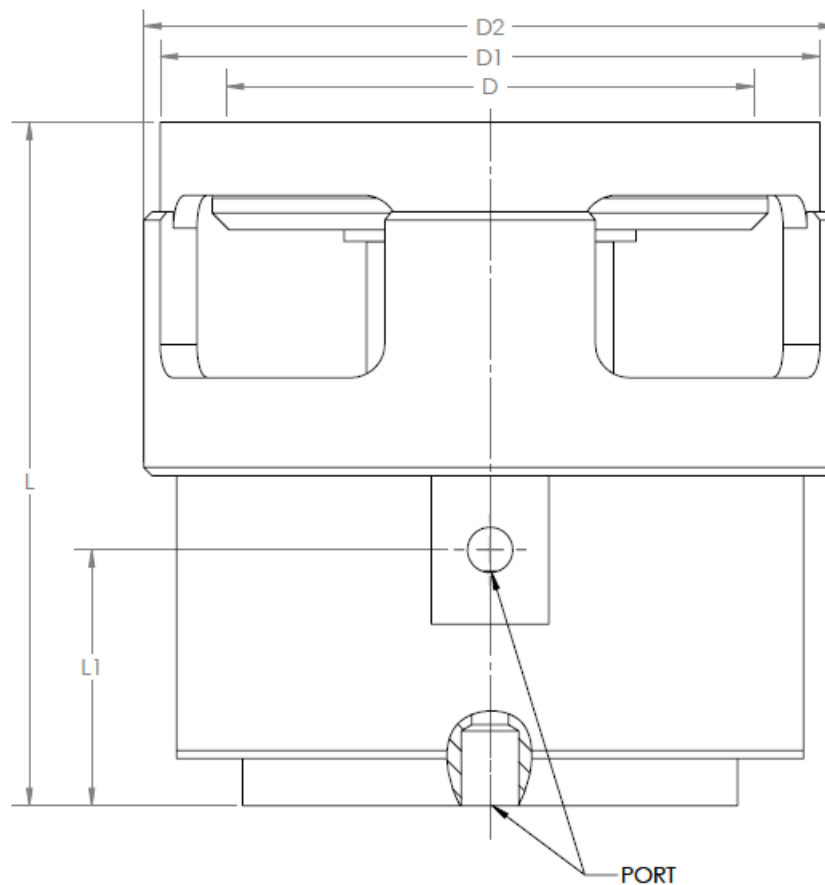
Photos are representative. Appearance may vary based on size/materials.

Size	Seal	PVC Part No.	PP Model No.	PVDF Model No.
<b>Normally-Closed (Automatic Spring Return)</b>				
4"	EPDM	IDA400EP-NC-PV	IDA400EP-NC-PP	IDA400EP-NC-PF
5"	EPDM	IDA500EP-NC-PV	IDA500EP-NC-PP	IDA500EP-NC-PF
6"	EPDM	IDA600EP-NC-PV	IDA600EP-NC-PP	IDA600EP-NC-PF
<b>Double-Acting (Air x Air)</b>				
4"	EPDM	IDA400EP-AA-PV	IDA400EP-AA-PP	IDA400EP-AA-PF
5"	EPDM	IDA500EP-AA-PV	IDA500EP-AA-PP	IDA500EP-AA-PF
6"	EPDM	IDA600EP-AA-PV	IDA600EP-AA-PP	IDA600EP-AA-PF

Part number shown EPDM seals. For FKM, change "EP" to "V", example: IDA400V-NC-PV. For other body materials, consult factory.

For JIS thread, add -JIS to part number.

### SERIES IDA QUICK DUMP VALVE DIMENSIONAL DRAWING



MODEL	SIZE	D		D1		D2		L		L1		PORT
		IN.	MM.	IN.	MM.	IN.	MM.	IN.	MM.	IN.	MM.	
IDA400	4"	2.75	69.9	4.00	101.6	4.20	106.7	5.00	127.0	2.00	50.8	1/8" NPT
IDA500	5"	3.50	88.9	5.00	127.0	5.25	133.4	5.55	141.0	2.31	58.7	1/4" NPT
IDA600	6"	4.00	101.6	6.00	152.4	6.30	160.0	7.00	177.8	2.81	71.4	1/4" NPT