

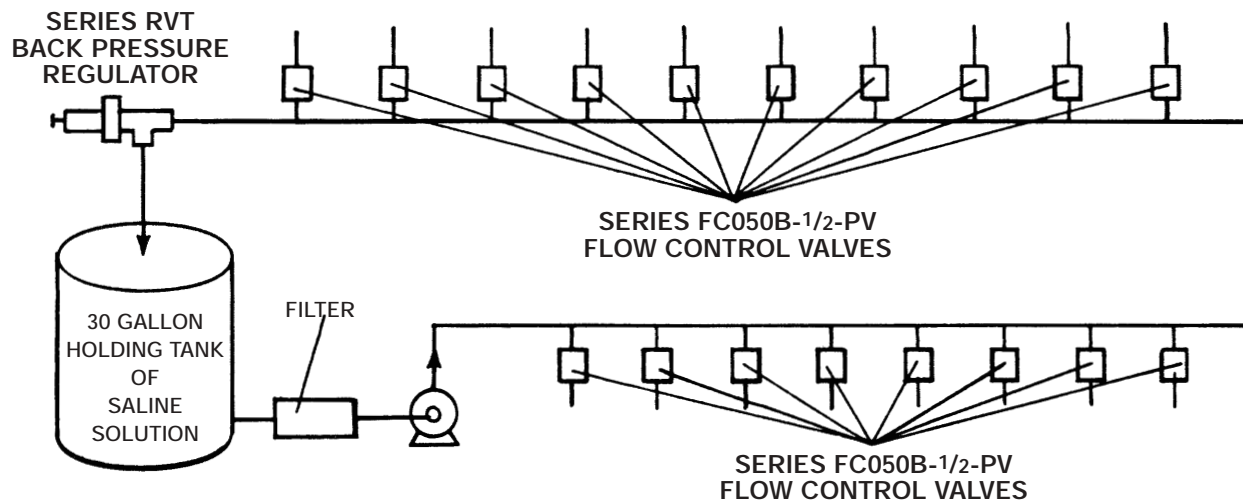
**MARKET** Contact Lens Manufacturing

**PRODUCT(S)** Pressure Relief Valve Series RVT100B-PV as back pressure regulator and  
Flow Control Valve Series FC050B-1/2-PV

**REQUIREMENT** To provide a consistent pressure and flow of saline (corrosive) solution to various points of use.

**PROCESS FLUID(S)** Saline Solution

**INLET PRESSURE/TEMPERATURE** 20 PSI / Ambient



Following the manufacturing of contact lenses each lens must be individually washed with saline solution before packaged. Prior to incorporating the above products, each wash station had its own individual pumping system which was both expensive to operate and maintain. To resolve the problem the manufacturer redesigned the system using one pump for the entire process and installing

one Flow Control Valve - 1/2 GPM at each station to assure precise flow. A Series RVT Relief Valve was installed as a backpressure regulator to provide consistent pressure to each Flow Control Valve. The used saline solution rinse empties into the bottom drain of the wash station and is recirculated back to the holding tank.