

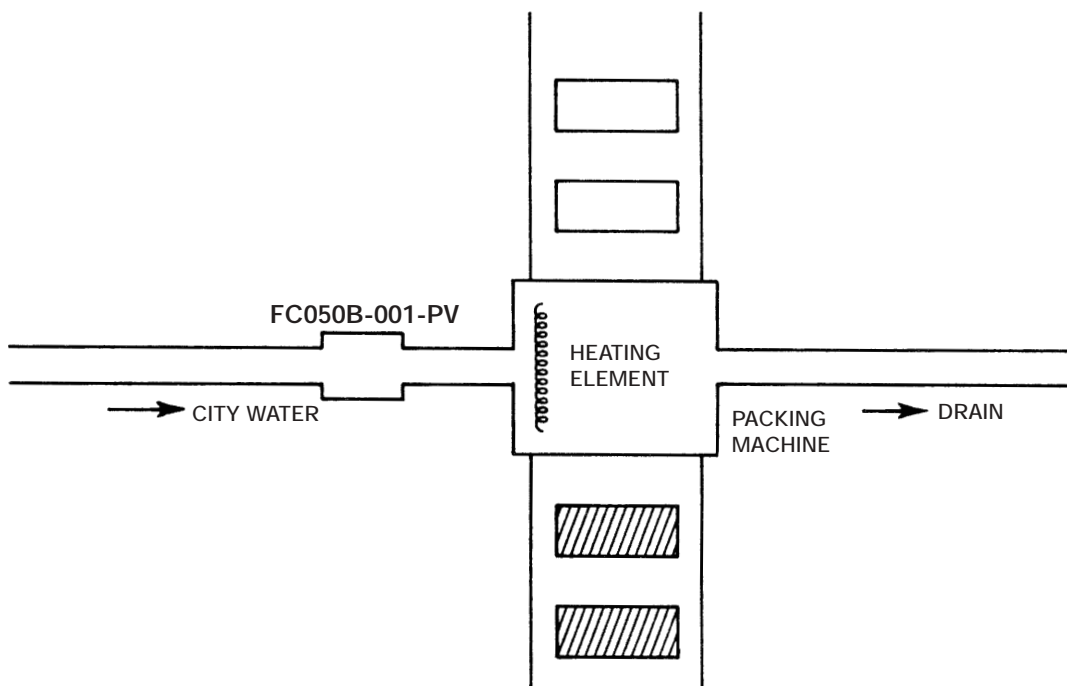
MARKET Poultry Processing

PRODUCT(S) Series FC050B-001-PV Flow Control Valves

REQUIREMENT To conserve water while optimizing the cooling process.

PROCESS FLUID(S) City Water

INLET PRESSURE/TEMPERATURE 40 PSI / 70°F



A major poultry processing company uses shrink wraps to seal its tray-packed chicken. The heat sealing element within the packing machine has been cooled directly via city water. This resulted not only in occasional damage to the heating

element as the result of variable low pressure/flow, but to excessive water consumption was well. Installation of the 1 GPM Flow Control Valves at each machine has resolved both the above problems.

NOTE: Bulletins are intended only to show possible applications of Plast-O-Matic products and are not design recommendations for a system or its safety. See statement of limitations in front of manual.