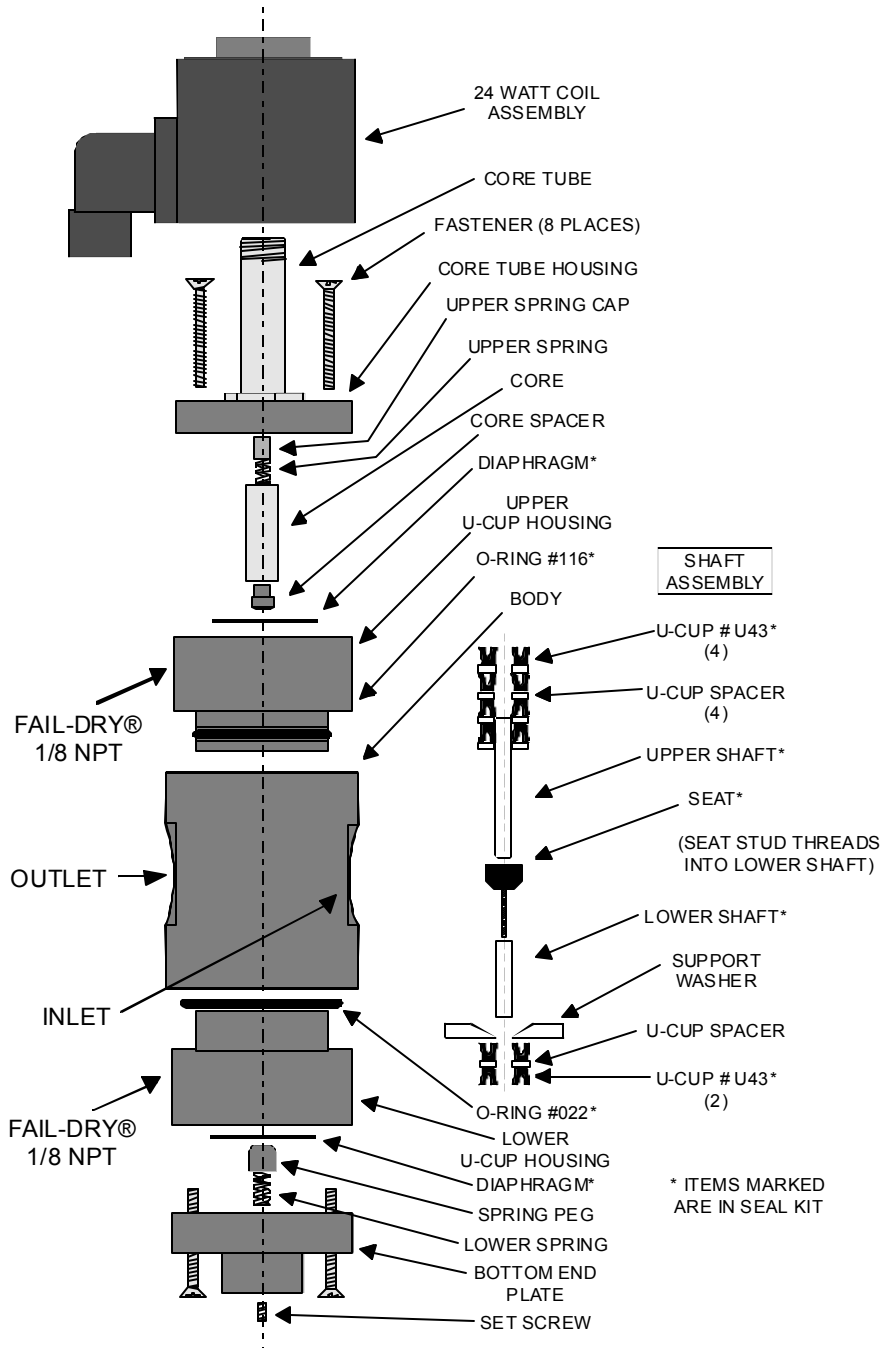


EASY-N.O.



* ITEMS MARKED ARE IN SEAL KIT



Series EASY-NO Normally Open SOLENOID VALVES

INSTALLATION & MAINTENANCE INSTRUCTIONS

IMPORTANT - BEFORE INSTALLING

Series EASY-NO generic valves will operate when properly installed and used within the recommended ranges of pressure, temperature, and chemical compatibility. The ultimate determination of material compatibility is previous successful use in the same application. Call our Technical Support for information about your application.

Caution: Plastic materials will degrade in ultraviolet (UV) light or sunlight.

MAXIMUM INLET PRESSURES for WATER*

BODY MAT'L	COLOR	77 °F (25 °C)	122 °F (50 °C)	at MAXIMUM TEMPERATURE
PVC (Geon®)	DARK GRAY	70 PSI 5 Bar	60 PSI 4 Bar	40 PSI @ 140 °F 3 Bar @ 60 °C
PVDF (Kynar®)	TRANSLUCENT WHITE (yellowish)	70 PSI 5 Bar	60 PSI 4 Bar	30 PSI @ 280 °F 2 Bar @ 140 °C

*or compatible chemical - ratings reduced for some applications.
Ratings reduced for DC voltage, or AC voltage less than nominal.
Rated for full vacuum up to the maximum temperature.

Back pressure 18 PSI maximum

Minimum temperature 40 °F (5 °C).

EPDM seals limited to 250 F (120°C), Buna-N to 200 F (95°C).

GEON is a trademark of The Geon Company

KYNAR is a trademark of Elf Atochem

TEFLON is a trademark of Dupont Company

See the Product Data Sheet or consult our Technical Support staff for more information.

INSTALLATION INSTRUCTIONS

Install the valve in the proper flow direction as indicated by the flow label. The valve may be set in any position, vertical or horizontal. Coil up mounting is recommended for maximum cycle life.

THREADED CONNECTION - Apply a suitable thread sealant (for example, Teflon tape) to male tapered threads to assure a "leak-tight" seal. Assemble "hand-tight" followed by a quarter (1/4) turn with a strap wrench. Do not over tighten or use pipe wrenches on plastic pipe and components.

Caution: Teflon tape will "*string*" as pipe threads are joined. Loose "*strings*" could lie across the seating surface and prevent the valve from completely closing. To avoid this problem, clean out old tape, and do not apply tape to the first thread.

Caution: Connect to plastic pipe and fittings only; when using metal pipe, install an intervening plastic fitting. Metal pipe and straight threaded pipe tends to cut, stretch, and distort the plastic bodies, resulting in cracking or leaking over time.

NON-THREADED CONNECTIONS - For solvent cementing or heat fusion, follow the instructions supplied with the cement or fusion equipment, or contact your distributor.

FAIL DRY® - A vent port is provided to protect the springs from contact with the liquid. If there is a failure of the primary seals, secondary seals protect the valve, and the leaking liquid drains out through the Fail Dry vent. You can run a line from the port to an open drain or containment.

MOUNTING - These valves are designed to be supported by the piping. The piping must be properly supported, taking into account the weight of the valve, piping, and process liquid.

MAINTENANCE

Plast-O-Matic recommends keeping a spare seal kit available for repairs. Seal life will vary in applications due to cycles, temperatures, pressures, chemicals, and concentration. Based on the application, a periodic inspection and maintenance plan should be established. The seal kit part number is "SK" plus the valve model number less the coil letter. For example, the seal kit for EASY4V8W24-NO-PV is SKEASY4V24-PV

PARTS

DESCRIPTION	MATERIAL	Qty
24 WATT COIL ASSEMBLY	see coil instruction	1
CORE TUBE		1
FASTENER (#6-32 X 1 ¼ Flat Head)	STAINLESS STEEL	8
CORE TUBE HOUSING	PVDF (Kynar)	1
UPPER SPRING CAP	BRASS	1
UPPER SPRING	STAINLESS STEEL	1
CORE	430F STAINLESS	1
CORE SPACER	Teflon	1
DIAPHRAGM	Seal Material ①	2
UPPER U-CUP HOUSING	Body Material ②	1
O-RING #116	Seal Material ①	1
BODY	Body Material ②	1
U-CUP #U-43	Seal Material ①	6
U-CUP SPACER	Body Material ②	6
UPPER SHAFT	Teflon	1
SEAT	Seal Material ①	1
LOWER SHAFT	Teflon	1
SUPPORT WASHER	Body Material ②	1
O-RING #022	Seal Material ①	1
LOWER U-CUP HOUSING	Body Material ②	1
SPRING PEG	PVC	1
LOWER SPRING	STEEL	1
BOTTOM END PLATE	Body Material ②	1
SET SCREW (1/4-20 X ¼ Cone Point)	STAINLESS STEEL	1

① Seal elastomer suffix: EP for EPDM, V for Viton®, B for Buna-N

② Material suffix: PV for PVC, PE for PVDF.

PLAST-O-MATIC
VALVES, INC.

1384 Pompton Avenue

Cedar Grove, NJ 07009-1095

- Telephone (973) 256-3000

- Fax (973) 256-4745

- e-mail info@plastomatic.com