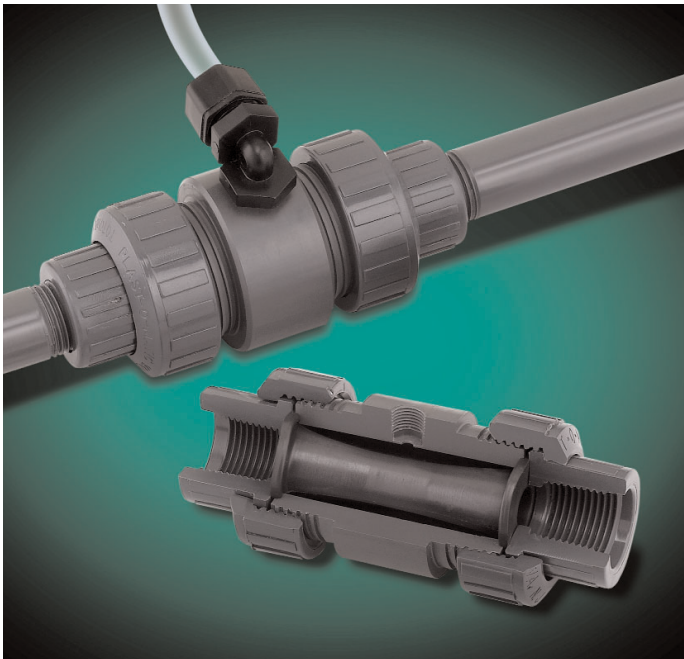


HIGH CYCLE LIFE AIR-OPERATED PINCH VALVE PATENT PENDING EPDMH² ELASTOMER SLEEVE DESIGN



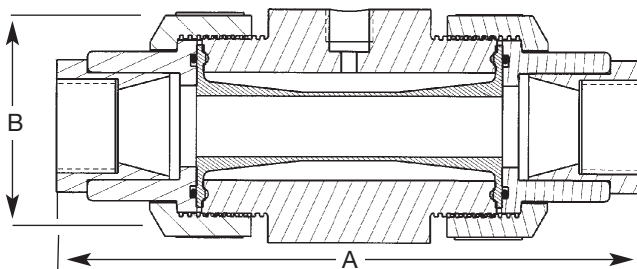
FEATURES

- Breakthrough variable thickness sleeve design eliminates twisting and tearing of the pinch element.
- EPDM Sleeve tested to over 1,000,000 cycles in laboratory conditions.
- Sleeve design is ideal for slurries, chemicals, and high purity applications.
- High flow rate and bubble tight shutoff: A high-performance, clean and affordable alternative to air-operated diaphragm valve and ball valves.
- True union connections for easy installation and maintenance.
- No metal parts; safe for corrosive environments.

SPECIFICATIONS

- Body Materials: Polypro (non-wetted)
- Wetted Materials: PVC, CPVC, PP or PVDF; EPDMh²
- Air Connection: 1/8" FNPT on 1/2" size; 1/4" FNPT on 3/4" and 1"
- Compressed Air Requirement, 45 PSI over media pressure
- Full port design

DIMENSIONS



Pipe Size	A		B	
	IN.	MM	IN.	MM
1/2"	4 7/8"	123.8	2"	50.8
3/4"	7 5/32"	181.7	2 25/32"	70.6
1"	10 9/32"	261.1	4 1/16"	103.2