

INSTALLATION, MAINTENANCE & OPERATING INSTRUCTIONS

SERIES IDA AIR-OPERATED QUICK DUMP VALVES

INSTALLATION – Refer to drawing on reverse side

1. IMPORTANT – BEFORE INSTALLING

Plast-O-Matic IDA dump valves may be built as double-acting or normally closed. When properly installed and used within the recommended ranges of pressure, temperature, and chemical compatibility, double-acting will shift to the opposite position when actuated and normally closed will open when actuated by air pressure.

Series IDA-AA requires 15 PSI air pressure to open; 20 PSI air pressure to close.

Series IDA-NC requires 40 - 80 PSI (3 - 6 Bar) air pressure to open.

Note: Not for pressurized systems.

2. INSTALLATION:

A. Install the valve vertically in the proper flow direction as indicated by the flow label. For solvent cementing or heat fusion, follow instructions supplied with the cement or fusion equipment, or contact your distributor.

The Dump valve is to be welded into the sink base. The diameter at the top of the valve is either 4", 5", or 6" depending on the size of the valve you purchased. Carefully measure the diameter of your valve and size the sink drain hole accordingly for solvent cement welding or fusion welding as applicable to the material of the valve housing. These valves can be purchased in either of two forms: Air to open, spring to close (also referred to as Normally Closed, NC), and air to open, air to close. For the NC valve, air is applied to the 1/8 NPT port on the side of the valve. The valve is designed to fully open at 40 PSI. It is recommended that air pressure not exceed 80 PSI. Air should be supplied by means of a three way valve (typically solenoid type) that permits exhausting the air in the valve when the valve is to be closed by the spring. When air is applied, the valve will open. When the air in the valve is exhausted, the valve will close.

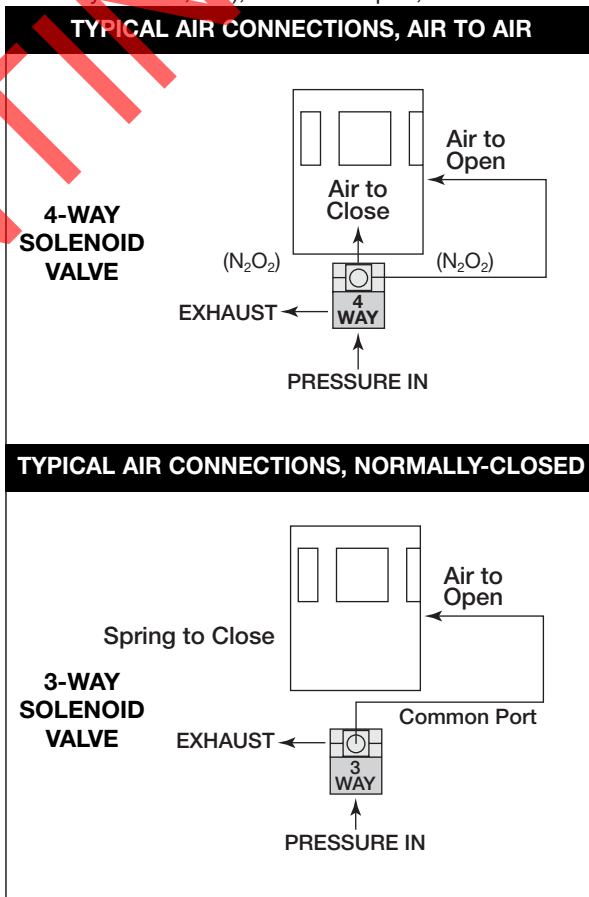
For an "air by air" valve, it will be necessary to use a 4 way valve. This allows the dump valve to be energized open with air, and de-energized closed with air. Air pressure applied to the side port will open the valve, and air applied to the bottom port will close the valve.

B. Air Connection: Recommended air pressure for actuation is 40 - 80 PSIG (3 - 6 bar). The air should be filtered, regulated, and lubricated, with no solvent vapors or detergents, for longer service life.

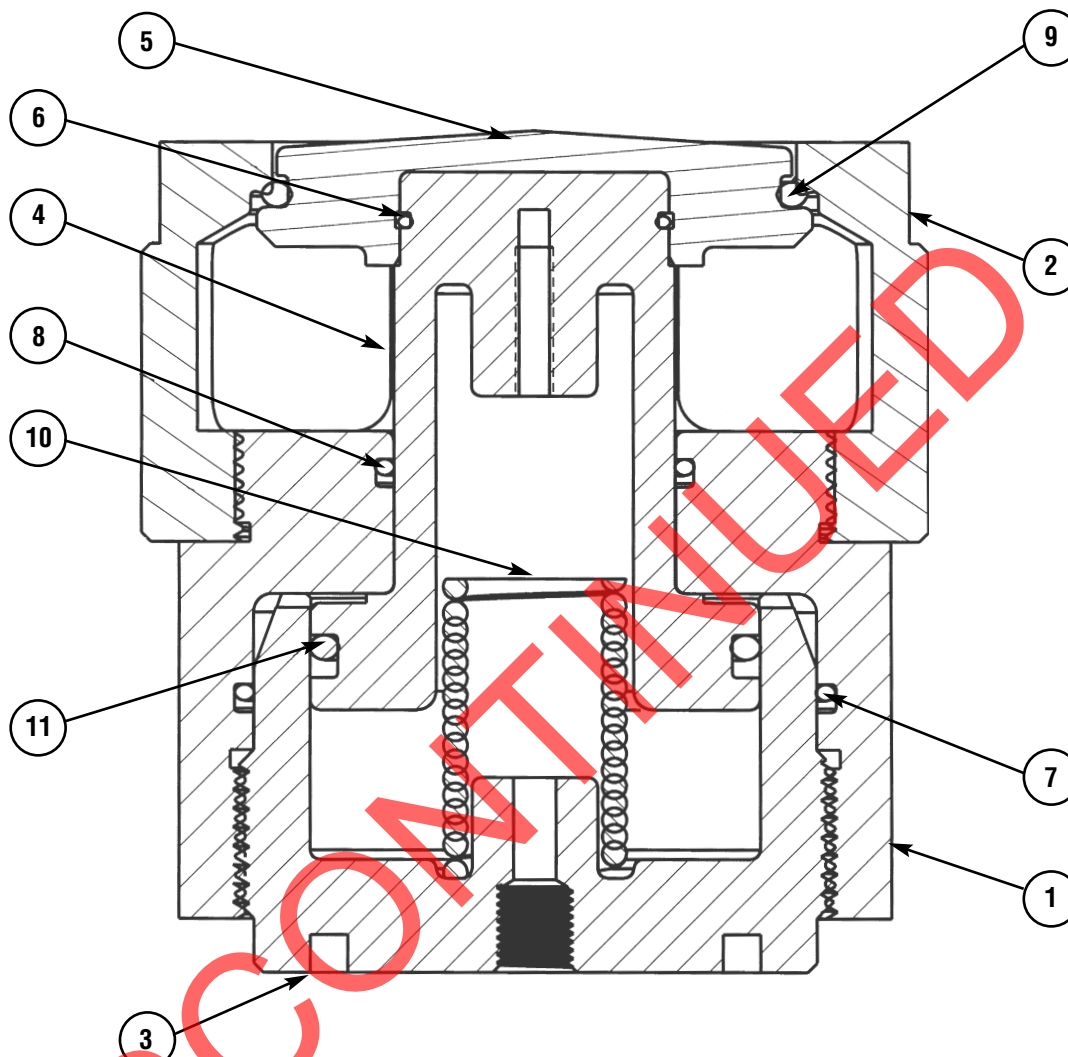
C. Mounting: These valves are designed to be supported by the mounting and piping. The piping must be properly supported, taking into account the weight of the valve, piping, and process liquid.

3. MAINTENANCE

Plast-O-Matic recommends keeping a spare seal kit available for repairs. Seal life will vary in applications due to cycles, temperatures, pressures, chemicals, and concentration. Based on the application, a periodic inspection and maintenance plan should be established. Seal kit part numbers are "SK" plus the part number less the material suffix. For example, the seal kit for IDA400V-NC-PV is SKIDA400V-NC. The seal kit consists of all o-rings, seat and spring as shown in the parts drawing on page 2.



SERIES IDA AIR-OPERATED QUICK DUMP VALVES PARTS LIST



Item #	Qty	Model #	Description
1	1	8297	HOUSING - Lower Half
2	1	8298	HOUSING - Upper Half
3	1	8299	CYLINDER
4	1	8300	PISTON /SHAFT
5	1	8301	SEAT
6	1	0130	O-RING
7	1	0240	O-RING
8	1	0225	O-RING
9	1	0339	O-RING
10		LHC 162N09	SPRING
11	1	0334	O-RING